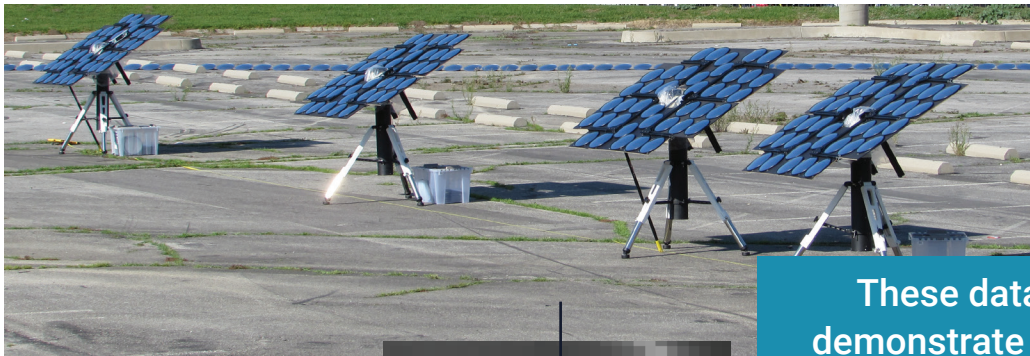
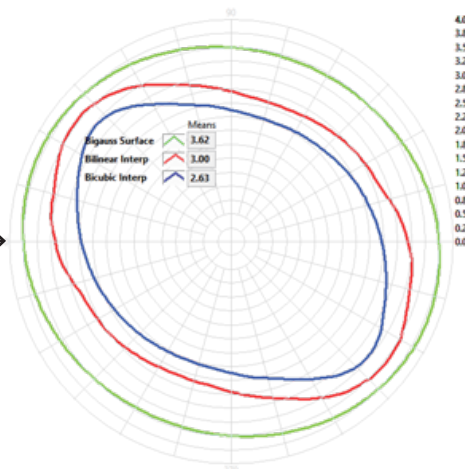
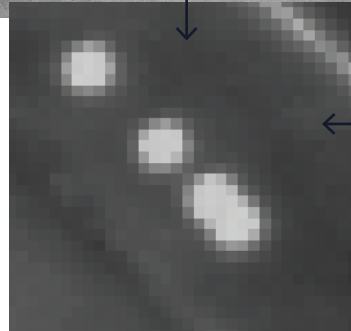
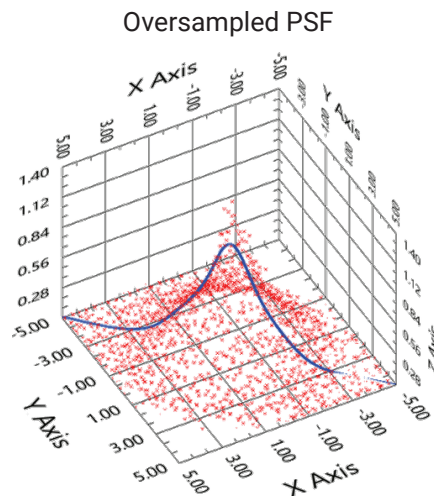


Imager/Imaging Forensics

Multiple samples create an “oversampled” data set representing imager performance and characteristics at a high spatial resolution.



These data demonstrate the imager's resolving power... How far apart do two objects need to be to be viewed as distinct?



A Point Spread Function (PSF) based analysis of the imager's resolving powers: An Optical Fingerprint!

Identifying specific image optical criteria can provide a means to prevent process and image tampering.

Unique and powerful image quality assessment technology with novel geometric evaluation tools.

FLARE
Vicarious Calibration Network

How does FLARE advance conventional calibration?

- FLARE is specific to each imager's optical performance
- Provides world class uncertainty
- Serves UAVs, Airborne or Satellite platforms
- Subscription service offered at fractional and controlled costs when compared to conventional methods

[LEARN MORE www.flare-network.com](http://www.flare-network.com)

Better Calibration | Better Data | Better Decisions