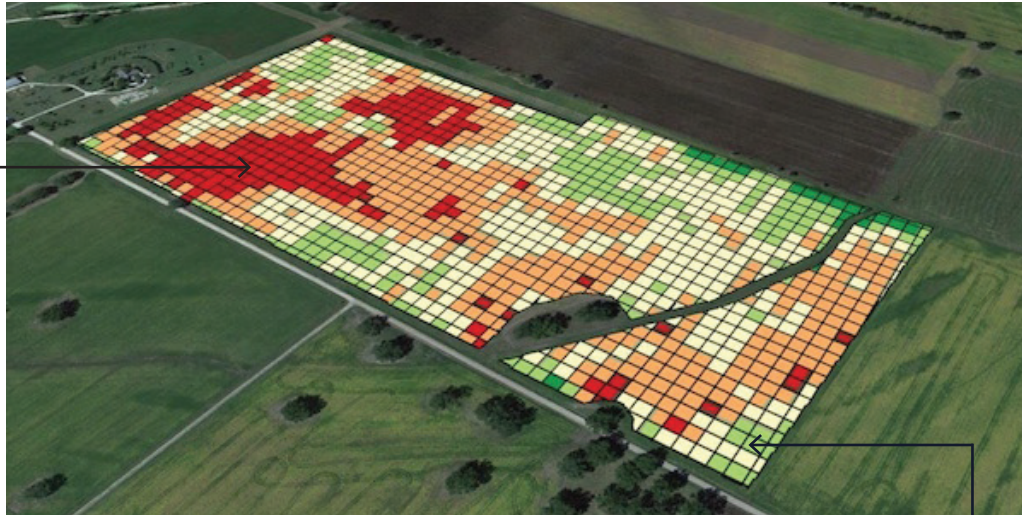


# Vegetation and Agriculture Analysis

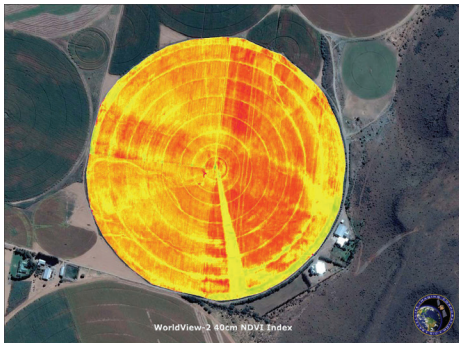
Orbiting and Airborne sensors can capture images using multiple spectral channels such as “red”, “green”, “blue,” and “near infrared”.

Species Identification (locating unwanted plants)

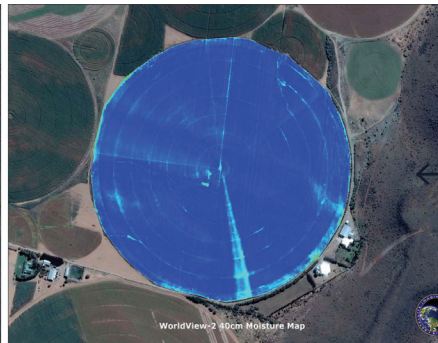


precisionhawk.com/agriculture/

Health and Moisture Mapping



WorldView-2 NDVI Index



WorldView-2 Moisture Map

Careful analysis of the ratios of spectral channels can be used to evaluate vegetation health, soil moisture, plant emergence (yield), and more.

With detailed maps farmers can target resources where they are needed – avoiding overuse of pesticides, water, and fertilizer.

Reducing uncertainty in the calibration of imagers reduces uncertainty in the resulting precision agriculture intelligence.

## FLARE

Vicarious Calibration Network

How does FLARE advance conventional calibration?

- FLARE is specific to each imager's optical performance
- Provides world class uncertainty
- Serves UAVs, Airborne or Satellite platforms
- Subscription service offered at fractional and controlled costs when compared to conventional methods

[LEARN MORE www.flare-network.com](http://www.flare-network.com)

Image Copyright © DigitalGlobe. All rights reserved

**Better Calibration | Better Data | Better Decisions**